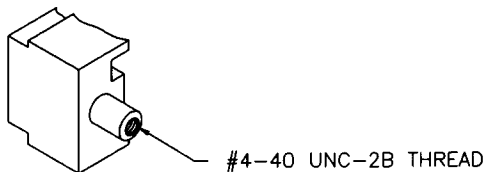


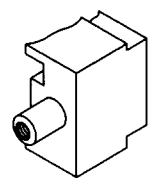
Tous droits strictement réservés. Reproduction ou communication à des tiers
 interdite sans quelque forme que ce soit sans autorisation écrite du propriétaire.
 Propriété de FCI. Droits de reproduction FCI.

All rights strictly reserved. Reproduction or issue to third parties in any
 form whatever is not permitted without written authority from the proprietor.
 Property of FCI. Copyright FCI.

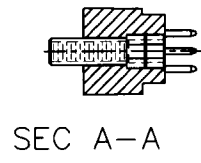
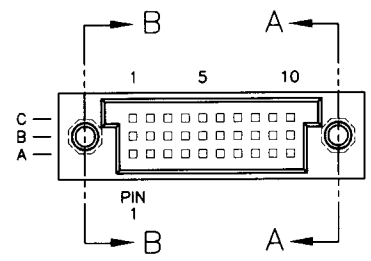
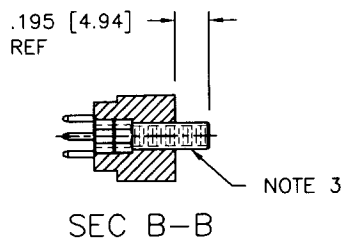
PRODUCT NUMBER
50006-XX028



L.E.



R.E.



- NOTES:
- IDENTICAL TO P/N 50006-1030A EXCEPT AS SHOWN W/JACK SCREW INSERTS INSTALLED ON BOTH ENDS.
 - HOUSING P/N 51062-X030X
 - HARDWARE P/N 95729-001 (INSTALLED ON BOTH ENDS)
 - FOR ADDED DIMENSIONAL INFORMATION REFER TO DOCUMENT NUMBER "50006"

mat'l. code				tolerances unless otherwise specified		CUSTOMER COPY		Electronics www.fciconnect.com		
ltr	ecn no	dr	date	linear	.XX±.01/.X±.3		projection	title		
A	V51027	MSC	8/17/95		.XXX±.005/.XX±.13			3 ROW VERTICAL HEADER		
B	V00592	LSS	02/29/00		.XXX±.0020/.XXX±.051			P.F., SPECIAL INSERTS, 0 G.P.		
C	V01815	JWS	7/12/00	angles	0° ±2°			product family HPC		
				dr	M. CLOUSER	8/17/95		code		
				engr	J. AFTON	8/17/95		213		
				chr	J. AFTON	8/17/95		sheet		
				appd	S. CLARK	8/17/95	1 of 1			
sheet index		revision sheet		C	1		scale		A 50006-XX028	
						1:1		cage code		
								22526		

ACAD